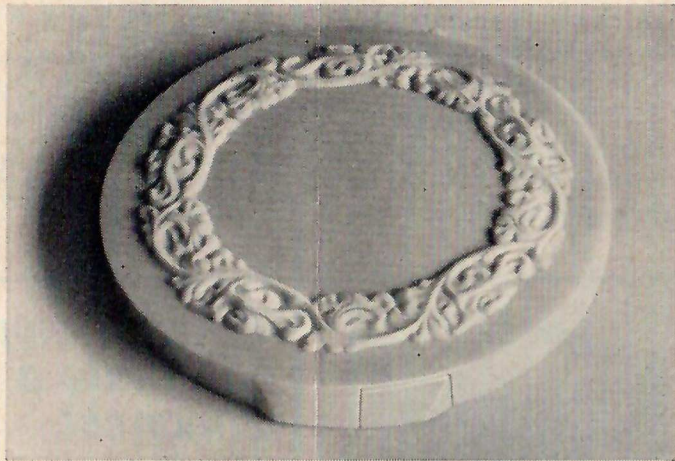


a 1779



unforgettable

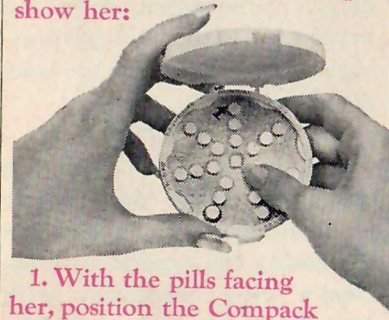
When your doctor's patient is given a prescription for Enovid-E, the pharmacist will dispense the pills in the new Compack tablet dispenser. The Compack contains no moving parts. It is easy to understand and use. Each pill is sealed for maximal protection.

And, of prime importance to the patient, a completely automatic record is kept of her cycle and of her pill days.

The Compack makes the dosage regimen "unforgettable." For you, this is a distinct advantage: You will spend far less time teaching patients the Enovid-E medication routine.

However, there are certain simple instructions to give the patient regarding the use of the Compack itself. Once these are clearly understood, she should have no difficulty using each month's Enovid-E Compack Refill.

Here are the four simple steps to show her:



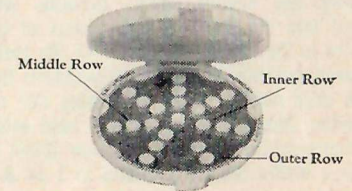
1. With the pills facing her, position the Compack Refill so that the arrow points to the day her period starts. Then, snap the Refill into locked position by pressing down around the button catch. The Refill should be flat in the Compack. To remove it, lift up at any day and pull off.



2. Her first pill (circled) is to be taken five days after her period starts.



3. To remove a pill, she simply pushes the pill down through the opening in the bottom of the Compack.



4. The pills should be taken consecutively—the pills in the outer row one each day of the first 7 days, the middle row the second 7 days, and the inner row the last 6 days.

for "The Pill" ...the perfect pack
ENOVID-E[®]
Each tablet contains:
norethynodrel 2.5 mg.
mestranol 0.1 mg.
Compack[™]
tablet dispenser

Send for free 24-page booklet: G. D. SEARLE & CO. SEARLE P. O. Box 5110, Chicago, Illinois 60680