

ca 1731

DESIGN.

No. 30,862.

Patented May 23, 1899.

**E. D. GRAY.
PESARY.**

(Application filed Apr 26, 1899.)

Fig. 1.

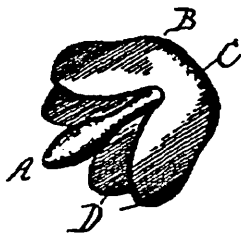
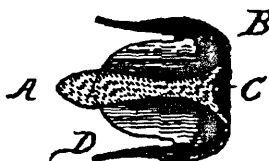


Fig. 2.



Witnesses
W. Smith
E. E. Ellis

Inventor
Earl D. Gray
by C. D. Stewart
Attorney

UNITED STATES PATENT OFFICE.

EARL D. GRAY, OF DENVER, COLORADO.

DESIGN FOR A PESSARY.

SPECIFICATION forming part of Design No. 30,862, dated May 23, 1899.

Application filed April 26, 1899. Serial No. 714,589. Term of patent 14 years.

To all whom it may concern:

Be it known that I, EARL D. GRAY, a citizen of the United States, residing at Denver, in the county of Arapahoe, State of Colorado, have invented a certain new and original Design for Pessaries, of which the following is a description, reference being had to the accompanying drawings, and to the letters of reference marked thereon.

My invention is a new and original design for pessaries; and the leading feature consists of a pessary having the shape and configuration herein shown and described.

The invention is shown in the accompanying drawings, in which—

Figure 1 is a perspective view, the pessary

being held at an incline. Fig 2 's a cross-section, the pessary being laid on its side.

In the drawings, A represents the stem of the pessary, which merges into the body part B, forming the base C, the body part enclosing the stem A and formed with the scallops D.

I claim—

The design for a pessary, substantially as shown and described.

In testimony whereof I affix my signature in presence of two witnesses.

EARL D. GRAY.

Witnesses:

S. C. WARREN,
HARRY B. TEDROW.

No. 30,862.

DESIGN.

Patented May 23, 1899.

E. D. GRAY.
PESSARY.

(Application filed Apr 26, 1899.)

Fig. 1.

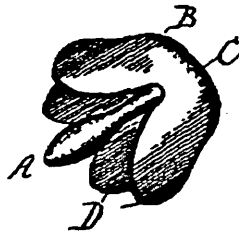
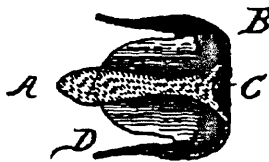


Fig. 2.



Witnesses
C. W. Smith
E. E. Ellis

Inventor
Earl D. Gray
by *C. D. Stewart*
Attorney

UNITED STATES PATENT OFFICE.

EARL D. GRAY, OF DENVER, COLORADO.

DESIGN FOR A PESSARY.

SPECIFICATION forming part of Design No. 30,862, dated May 23, 1899.

Application filed April 26, 1899. Serial No. 714,589. Term of patent 14 years.

To all whom it may concern:

Be it known that I, EARL D. GRAY, a citizen of the United States, residing at Denver, in the county of Arapahoe, State of Colorado, have invented a certain new and original Design for Pessaries, of which the following is a description, reference being had to the accompanying drawings, and to the letters of reference marked thereon.

My invention is a new and original design for pessaries; and the leading feature consists of a pessary having the shape and configuration herein shown and described.

The invention is shown in the accompanying drawings, in which—

Figure 1 is a perspective view, the pessary

being held at an incline. Fig 2 's a cross-section, the pessary being laid on its side.

In the drawings, A represents the stem of the pessary, which merges into the body part B, forming the base C, the body part enclosing the stem A and formed with the scallops D.

I claim—

The design for a pessary, substantially as shown and described.

In testimony whereof I affix my signature in presence of two witnesses.

EARL D. GRAY.

Witnesses:

S. C. WARREN,

HARRY B. TEDROW.

UNITED STATES PATENT OFFICE.

EARL D. GRAY, OF DENVER, COLORADO.

DESIGN FOR A PESSARY.

SPECIFICATION forming part of Design No. 30,862, dated May 23, 1899.

Application filed April 26, 1899. Serial No. 714,589. Term of patent 14 years.

To all whom it may concern:

Be it known that I, EARL D. GRAY, a citizen of the United States, residing at Denver, in the county of Arapahoe, State of Colorado, have invented a certain new and original Design for Pessaries, of which the following is a description, reference being had to the accompanying drawings, and to the letters of reference marked thereon.

My invention is a new and original design for pessaries; and the leading feature consists of a pessary having the shape and configuration herein shown and described.

The invention is shown in the accompanying drawings, in which—

Figure 1 is a perspective view, the pessary

being held at an incline. Fig 2 's a cross-section, the pessary being laid on its side.

In the drawings, A represents the stem of the pessary, which merges into the body part B, forming the base C, the body part enclosing the stem A and formed with the scallops D.

I claim—

The design for a pessary, substantially as shown and described.

In testimony whereof I affix my signature in presence of two witnesses.

EARL D. GRAY.

Witnesses:

S. C. WARREN,

HARRY B. TEDROW.